

UK PROGRAMME FOR THE COLLECTION AND MANAGEMENT OF FISHERIES DATA IN 2005

Contents:

1. Introduction

2. Chapter II, C: Collection of data concerning fishing capacities

2.1 Minimum programme

2.2 Extended programme

3. Chapter II, D: Collection of data related to fishing effort

3.1 Minimum programme

3.2 Extended programme

4. Chapter III, E: Collection of data related to catches and landings

4.1 Landings

4.1.1 Minimum programme

4.1.2 Extended programme

4.2. Discards

4.2.1 Minimum programme

4.2.1.1. Methods

4.2.2 Extended programme

4.3 Collaboration

4.4 Discard sampling costs

5. Chapter III, F: Collection of data concerning the catches per unit of effort and/or effective effort of specific commercial fleets.

5.1 Minimum programme

5.2 Extended programme

5.2 Collaboration

5.4 Costs for studies of commercial fleet CPUE indices

6. Chapter III, G Scientific evaluation surveys of stocks

6.1 Minimum programme

(A) UK priority 1 surveys (Appendix XIV). North Sea & Eastern Channel & ICES Area II

6.1.1 English North Sea Groundfish Survey, ICES area IV, 3rd quarter (IBTS 3rd quarter)

6.1.2 English North Sea Groundfish Survey, ICES area IV, 1st quarter (IBTS 1st quarter)

6.1.3 Scottish International Bottom Trawl Survey, ICES area IV, 1st quarter (IBTS 1st quarter)

6.1.4 Scottish August North Sea Ground Fish Survey, ICES area IV, 3rd quarter (IBTS 3rd quarter)

6.1.5 English Channel Beam Trawl Survey, ICES areas IVb, c, VIId, 3rd quarter (BTS)

6.1.6 Demersal Young Fish Survey, English coast of North Sea and Channel, IVb, c, VIId, 3rd quarter (Demersal Young Fish Survey)

6.1.7 Scottish North Sea Herring Acoustic Survey, ICES area IVa, 3rd quarter (NS Herring Acoustic Survey)

6.1.8 Atlanto-Scandian herring survey (ASH)

(B) UK priority 1 surveys (Appendix XIV). North East Atlantic Area & Western Channel

6.1.9 Scottish International Bottom Trawl Survey, ICES area VI & VIIa, 4th quarter (Western IBTS 4th quarter)

6.1.10 English Western Groundfish Survey, VIIe-k, VIIla, 4th quarter (Western IBTS 4th quarter)

6.1.11 Irish Sea and Bristol Channel Beam Trawl Survey, ICES area VIIa, f, g, 3rd quarter (ISBCBTS)

6.1.12 Scottish West Coast Herring Acoustic Survey, ICES area VIa(N), 3rd quarter (Spawning/prespawning herring acoustic survey)

6.1.13 Northern Irish Spawning/prespawning herring acoustic survey, ICES area VIIa, 3rd quarter (Spawning/prespawning herring acoustic survey)

6.1.14 DARD groundfish surveys; ICES area VIIa; 1st and 4th quarters (DARD groundfish)

UK PROGRAMME FOR THE COLLECTION AND MANAGEMENT OF FISHERIES DATA IN 2005

6.2 Extended programme

(A) UK priority 2 surveys (Appendix XIV). North Sea & Eastern Channel & ICES Area II

- 6.2.1 Scottish Underwater Television Surveys, ICES area IVa,b, 2nd and 3rd quarters (Nephrops TV survey)

(B) UK priority 2 surveys (Appendix XIV). North East Atlantic Area & Western Channel

- 6.2.2 Western Channel Beam Trawl Survey, VIIe, 4th quarter (WCBTS)
- 6.2.3 Scottish International Bottom Trawl Survey, ICES area VI & VIIa, 1st quarter (Scottish West Coast, Young Fish Survey)
- 6.2.4 DARD herring larvae; ICES area VIIa, 3rd quarter (DARD herring larvae)
- 6.2.5 DARD MIK-net; ICES area VIIa, 2nd quarter (DARD MIK-net)
- 6.2.6 DARD Nephrops; VIIa, 2nd & 3rd quarters (DARD Nephrops)
- 6.2.7 Irish Sea Egg production surveys; VIIa, 1st & 2nd quarters (Egg production surveys)
- 6.2.8 Scottish Underwater Television Surveys, ICES area VIa, 2nd and 4th quarters

6.3 Collaboration

6.4 Costs for research vessel cruises (Chapter III, G) and most biological parameters (Chapter III, I)

7. Chapter III, H: Biological sampling of catches: composition by age and by length

7.1 Minimum programme

- 7.1.1 Sampling Fish Markets for Length and Age; stocks specified in Appendix XV

Table 7.1 Sampling levels at age and length by species for Chapter III, F CPUE Indices and Chapter III, H Sampling at age and length

- 7.1.2 Exemptions
- 7.1.3 Sampling Discards for Length and Age; stocks specified in Appendix XV

7.2 Extended programme

- 7.2.1 Extensions regarding market sampling for length and age
- 7.2.2 Extensions regarding discards

7.3 Collaboration

7.4 Costs for Sampling Landings for Length and Age (Chapter III, H) including sampling for commercial CPUE indices (Chapter III, F)

8. Chapter III, I: Other biological sampling

- 8.1 Minimum programme
- 8.2 Extended programme
- 8.3 Collaboration
- 8.4 Costs for Collecting Biological Parameters (Chapter III, I) excluding data collected through research vessel surveys and market samples (Chapter III, G and H).

9. Chapter IV, J. Collection of economic data by groups of vessels

9.1 Minimum programme

10. Chapter IV, K. Gathering of data and the processing industry

11. Articles 9,10 Data Base and Data Access

12 Co-ordination

- 12.1 UK correspondent and internal co-ordination
- 12.2 Costs of database, general co-ordination and related scientific work

13. Resources and costs

14. Indicative costs for the year 2005-2006

15. Participating Departments and Agencies

UK PROGRAMME FOR THE COLLECTION AND MANAGEMENT OF FISHERIES DATA IN 2005

Annexes To Report

Costs Summary Tables:

Annex 1.A	Costs for Discards (Chapter III, E) and lengths or ages of Discards (Chapter III, H)
Annex 1.B	Costs for studies of commercial fleet CPUE indices (Chapter III, F)
Annex 1.C	Costs for research vessel cruises (Chapter III, G) and most biological parameters (Chapter III, I)
Annex 1.D	Costs for Sampling Landings for Length and age (Chapter III, H) including sampling for commercial CPUE indices (Chapter III, F)
Annex 1.E	Costs for Economic data and Coordination: Minimum programme
Annex 1.F	Costs for research vessel cruises (Chapter III, G) and most biological parameters (Chapter III, I), Extended programme
Annex 2	Raising procedure for English discard data
Annex 3	Bi-lateral agreement with Belgium for sampling overlanded catches
Annex 4	Detailed cost fiches for work under the Minimum Programme
Annex 5	Detailed cost fiches for work under the Extended Programme

UK PROGRAMME FOR THE COLLECTION AND MANAGEMENT OF FISHERIES DATA IN 2005

1. Introduction

In accordance with Article 6 of Council Regulation 1543/2000, this note sets out the UK programme for 2005 to meet the requirements of Council Regulation 1543/2000 and Council Decision 2000/439/EC, as implemented by Commission Regulation 1639/2001. The UK programme outlined in this document sets out the work the UK authorities intend undertaking directly or in conjunction with bodies and agencies within the UK to meet the requirements of the community minimum and extended programmes for the period 1 January – 31 December 2005.

The UK intends to meet its obligations under this legislation by:

- The use of registration data obtained by the appropriate authorities on British registered fishing vessels supplemented by the collection of additional data by DEFRA, SEERAD and DARD;
- The collection of data on fishing activity and commercial landings of marine fish into the UK, and by UK fishing vessels landing abroad, using staff in DEFRA, SEERAD, DARD and the corresponding authorities in the Channel Islands and Isle of Man;
- Carrying out surveys of discarding of fish by commercial fishing vessels >10m at sea using FRS, CEFAS and DARD staff;
- Carrying out surveys of the abundance of marine fish using FRS, CEFAS and DARD staff and research and charter vessels;
- Collection of other biological data on marine fish using CEFAS, FRS and DARD staff, and research vessels as appropriate;
- Making surveys of economic data subcontracting, as necessary, work to appropriate agencies such as the Sea Fish Industry Authority;
- Establishing new IT systems, including a server, a database, communications and technical staff to enable the data required under the legislation to be stored, maintained and accessed with appropriate security to ensure against improper access.

Details of the UK's programme of activities are given item by item based on EC Regulation 1639/2001. The resources expressly required to fulfil the items within the minimum and extended programmes are set out in Annex 4 and 5, respectively (NB supplied as Excel spreadsheets in the format required by the Commission). Detailed figures for 2005 are provided in the fiches, as requested by the Commission,. All costs are expressed in Euros, at current exchange rates. Annexes 1.A to 1.F at the end of this report summarise the key information supplied in Annexes 4 and 5.

UK PROGRAMME FOR THE COLLECTION AND MANAGEMENT OF FISHERIES DATA IN 2005

Module of evaluation of inputs: fishing capacities and fishing effort

2. Chapter II, C: Collection of data concerning fishing capacities

2.1 Minimum programme

In the UK the Registry of Shipping and Seamen (RSS) and the corresponding registries in the Channel Islands and Isle of Man already collect and maintain information on registered fishing vessels including their gross tonnage and their maximum continuous engine power as defined in Council Regulation 2930/86, as amended by Council Regulation 3259/94. These data are made available to Fisheries Departments and will be used to meet this requirement for data. These data are already provided to the Commission under Regulation 2090/98 and include information on the age of the fishing vessel.

Based on information supplied in logbooks, the UK is able to segment the fleet of vessels over 10m according to the sub division set out in Appendix III of the Regulation. There is no statutory reporting of fishing activity by vessels 10 metres and under overall length, and indeed for the UK all 10 metre and under vessels fall within the same segment for MAGP purposes. However, based on landings declarations and sales notes, the UK will make estimates of the vessels under 10 metres falling into the active gear segments. Given the large number of vessels in the under 10 metre fleet, many of which fish part time but which collectively represent only a minor proportion of total catch of most species, such estimates should be sufficiently accurate to meet the requirements of the regulation. It is planned that a survey of economic activity of the 10m and under fleet will be carried out in 2005. This data collection will incorporate the collection of catch and effort data as well to help validate the estimates of catch data done for the fleet, as well as providing extra information on the levels of fishing effort expended by this fleet.

For a number of segments it will only be possible to give a restricted breakdown by length band because there will be fewer than 10 vessels in the breakdown specified. Table 2.1 below summarises which sections of the fleet results will be available for, once aggregations are applied.

Data collected to meet the requirements of Regulation 2090/98 are covered exhaustively.

Table 2.1 – Analysis of Segments the UK will provide data for after taking into account aggregation

Segment	10-<12m	12-<24m	24-<40m	>=40m
Mobile – Beam	Y	Y	Y	Y
Mobile – trawl/seine	Y	Y	Y	
Mobile – Pelagic				Y
Mobile – Dredge	Y	Y	Y	
Mobile – Polyvalent				
Passive – Hooks	Y	Y	Y	
Passive- Nets	Y	Y	Y	
Passive – Pots/traps	Y	Y		
Passive – Polyvalent				
Polyvalent – M&P				

2.2 Extended programme

No additional work is planned under the EP although the UK already has a programme for identifying and recording engine power.

UK PROGRAMME FOR THE COLLECTION AND MANAGEMENT OF FISHERIES DATA IN 2005

3. Chapter II, D: Collection of data related to fishing effort

3.1 Minimum programme

The UK will use the data from completed logbooks for the parameters on fishing effort by technique. On the basis that the master is required to complete a separate entry in the logbook when fishing activity has taken place that day, then the UK expects to be able to report effort on the basis of days fished for active gear fishing.

The UK expects to be able to supply information on fishing effort by technique in Appendix VIII on a quarterly basis and according to the level 3 of geographical segregation defined in Appendix 1. These data will be based on the information supplied in the logbook by over 10 metre fishing vessels with estimates for the 10 metre and under fleet. Similarly information can be provided at the level of specific fishing efforts again based on the logbook data, which are gathered in an exhaustive way. The UK expects to be able cross-reference these effort data to the segments defined in Appendix III. The efficient provision of these data and those required under Chapter III, E will require some further development of UK fishery activity database systems, part of which falls under this programme. Table 2.1 above details the segments of the UK fleet data will be available for.

Information on fuel consumption will be made available on the basis of the economic surveys carried out on the fishing sector and the results will depend on the degree of co-operation obtained. (See comments in section 9 below, on economic data collected under Chapter IV)

3.2 Extended programme

No additional work is planned under the EP.

Module of evaluation of catches and landings

4. Chapter III, E: Collection of data related to catches and landings.

4.1 Landings

4.1.1 Minimum programme

The UK will provide data on commercial landings for all stocks mentioned in Appendix XII of the Regulation at precision level 3. Figures are based on information reported in logbooks (>10m vessels), landing declarations and sales notes (>10m and <10m). It expects to provide the information distinguishing the geographical origin of the catches according to the level 2 of geographical disaggregation of Appendix I. In addition the UK will subdivide landings by weight and value according to the segments defined in Appendix III by size category, by quarter and at the level of geographical disaggregation of Appendix I. The UK will provide information on all the landings of its vessels including those into the UK and those into other member states and third countries. The UK will also collect information on landings by foreign vessels into the UK.

As recommended by SGRN 2003, a pilot study will be carried out to assess the feasibility of collecting data from the recreational fisheries for cod. Eel will be added to the list of species for which landings and discards are required. However guidance on how to separate landings taken in freshwater and marine sectors is needed due to the highly migratory nature of this fish. In the absence of such guidance, the results will be in the form of a pilot study initially.

UK Fisheries Departments are also intending to introduce the registration of buyers and sellers of first sale fish. This will provide an additional data source in terms of allowing Fisheries Departments access to the records of purchases of fish. This will be compared with the information supplied in logbooks and sales notes by the vessel owners to validate the information reported for all segments. If shown to be necessary, amendments and adjustments will be made to the catch and activity data.

UK PROGRAMME FOR THE COLLECTION AND MANAGEMENT OF FISHERIES DATA IN 2005

4.1.2 Extended programme

No additional work is planned under the EP.

4.2. Discards

Discard sampling is essential to get complete estimates of the total catch by fishing vessels and hence get unbiased estimates of fishing mortality rates. Generally, the best way to estimate discarding is by sending trained observers on commercial fishing trips; although success depends on weather, the activities and goodwill of the fishing industry, and other uncontrollable factors.

4.2.1 Minimum programme

The UK carries out a fleet based sampling programme. As a result all species listed in Appendix XII are sampled if they form part of the catch. No sampling of vessels less than 10m will be undertaken by Catch Sampling Officers for Health and Safety reasons. Since, this segment of the fleet contributes only a small proportion of overall landings, this is not expected to bias the results. Under the MP, discard data for the stocks mentioned in Appendix XII of the Regulation will be reported at least annually as required by Chapter III, E(1)b. Based on existing sampling levels, calculations of precision show that coefficients of variation for the fleet level often exceeded +/- 25%. This arises from the substantial variation in both estimates of discarding and of raising factors between trips. This implies that a very large number of trips would have to be observed to consistently achieve the precision called for in the Regulation. This would involve excessive cost and the UK requests a derogation from the precision requirements on discard estimates as offered in paragraph 2 of E(1)c.

4.2.1.1 Methods

a) England:

All English vessels over 10m are listed and sampled at random on a quarterly basis. Trips are arranged on those vessels expecting to fish in the order of drawing them as nearly as possible. When on board, all catches are sampled if possible. A single observer is used on most vessels except beam trawlers where 2 staff are needed. Sampling effort is stratified on a quarterly basis and by gear segment.

Observers carry out sea trips aboard unchartered commercial fishing vessels to estimate the quantities of fish and shellfish discarded by the English and Welsh registered fleet (>10m overall length) that land to English and foreign ports. Sampling is stratified across quarter, gear type and area with number of days sampling on each strata based on the fleet's activity in the previous calendar year.

Discard (and retained) data collected during these programmes include:

- Estimates of the quantities discarded and retained for all Appendix XII species (EU regulation 1639/2001) and the majority of all other species encountered.
- Length measurements of the discards and retained catches.
- Age data for specified species (Appendix XII)
- Fleet, gear, fishery and biological information through on board discussion and questionnaire.

Raising Procedure

Having one specified method for sampling and raising the catches aboard commercial vessels is impossible because vessels, deck machinery, gears and crews all have an influence on accessibility of the catch and how it is representatively and randomly sampled. Sub-samples are taken and measured at haul level and raised to the haul based on total quantities of retained and discarded fish caught. A trip constitutes all sampled hauls added together. Hauls that are not sampled do not form part of the sea trip.

Discard data is not routinely raised to fleet level but this could be done by taking the estimated discards caught per hour and multiplying by the fleet's fishing hours. Where data has been raised for customers (e.g. working groups etc.) in the past it has been done to their specification or left as catch per hour depending on their preference. The flow diagram for raising data to trip level using effort is given in Annex 2.

b) Scotland

(FRS) has been sampling discards in the North Sea since 1975. The sampling strategy is almost identical to that used for landings. It involves the selection of vessels by marine area and gear. However, the sampling temporal stratification is in three month intervals. Using this stratification, the Marine Laboratory sends

UK PROGRAMME FOR THE COLLECTION AND MANAGEMENT OF FISHERIES DATA IN 2005

observers on approximately 50 different vessels fishing in the North Sea in any one year and 30 in the western region. Every haul is monitored and length frequencies of all discarded species are obtained by sampling 60 kg of discarded material from each haul. Samples of the landed catch are also measured. In addition otoliths are obtained from discarded cod, haddock, whiting and saithe. Raised numbers at age are calculated in the same way as for the landings for these four major species.

Scotland (FRS) will monitor Nephrops discards in North Sea fisheries by functional unit, e.g. Firth of Forth, Moray Firth in the North Sea and the Clyde, Inner Hebrides, and South Minch in the NE Atlantic. Each fishery is sampled quarterly by sending scientific observers on board commercial vessels. About 10 different vessels will be sampled in each year in the North Sea and 10 in the west. While on board, observers monitor every haul and obtain length frequencies of the discard and landings components from sub-samples (at least 200 Nephrops are measured from each category of the sorted landings and discards), which are then raised to fleet level.

Monitoring of pelagic species (herring and mackerel will also be continued in both the North Sea and western regions. Sampling procedures are very similar to those employed in the demersal fishery. For each haul estimates are made of the total catch and of the discards. A sub-sample of the catch (64kgs) and the discards (64kgs) are taken. Information on length, age, sex and maturity is recorded. The sampling effort is spread across the two fisheries with approximately 10 trips being undertaken in a year in the North Sea and 10 in the west.

c) Northern Ireland

In previous years, it has not been possible for NI to obtain discard samples from the commercial fleet because of a policy of non-cooperation from the industry. The programme proposed for 2005 is therefore completely dependant on obtaining the necessary permission from vessel owners and skippers. With this proviso, under the minimum programme DARD will estimate discard volumes for the following stocks taken by fleets landing significant quantities into Northern Ireland:

- Herring (VIIa; VIa)
- Haddock (VIIa; VIa)
- Whiting (VIIa; VIa)
- Hake (VI, VII)
- Plaice (VIIa)
- Nephrops (VIIa)

Herring discards from Northern Ireland vessels comprise slippage of fish from midwater trawlers targeting herring, and discards from otter trawlers targeting Nephrops and whitefish. No previous estimates of slippage of herring have been made for trawlers landing in Northern Ireland or in the Clyde, and sampling intensity to achieve precision level 1 is presently unknown. Studies will be undertaken as part of the minimum programme. Results will be used to confirm the precision levels that are achievable with these programmes. Any required modifications will be notified in future. If the costs of this element of the programme appear too high relative to the value of the fisheries on these stocks discarding data for targeted herring fisheries in these areas will not be collected.

A fisher self-sampling scheme will be continued using single-rig Nephrops trawlers fishing in Division VIIa to provide random samples of discards containing fish, small whole Nephrops, detached Nephrops heads and other rubbish. From these samples, the weights or numbers of discarded organisms are obtained as a ratio of the expected weight of Nephrops tails removed from the detached heads in the samples. The ratios are estimated over all samples in a quarter and applied to reported quantity of Nephrops tails landed by the fleet to give estimates of total fleet discards. Target sampling rate in recent years has been five samples per month, although current Minimum Programme levels for Nephrops length distribution of one sample per 50 tonnes landed imply 106 samples per year from landings into Northern Ireland.

During 2005, two seagoing observers will be employed to sample flatfish and groundfish species using a similar sampling intensity to EU Contract 98/095 and will be based on stratified random sampling of trawlers that have facilities to take observers and meet the necessary safety standards. Methods for observation and analysis of data will be those described in the reports of EC Contract 98/095. Observers will estimate quantities and size composition of all species landed and discarded from observed hauls, and record data for as many hauls as possible within working-time constraints. The additional cost of recording data on non-MP species is not measurable in financial terms as costs are tied to staff salaries and number of days at sea. Reduced precision of discard estimates for MP species is expected if sampling rates are reduced within hauls due to time spent on other species.

UK PROGRAMME FOR THE COLLECTION AND MANAGEMENT OF FISHERIES DATA IN 2005

4.2.2 Extended programme

No additional sampling is proposed under the EP. However, under the Minimum Programme all species caught are sampled which should allow calculation of discards at the level of disaggregation (quarterly by gear) for the Extended Programme. However, it is not possible to guarantee that all gears listed in Appendix VIII will be sampled in every quarter.

4.3 Recreational Fisheries

There are no marine recreational fisheries for species listed in Appendix XII. For salmon, the only recreational fishing is in rivers for salmon returning to spawn. There is no targeted recreational fishing for salmon in marine waters in the North Sea. However, the revised Regulations include cod in Appendix XII and a pilot study will be undertaken to estimate landings of this species in 2006.

4.4 Conversion factors

Conversion factors were provided to the Commission in 2003 and have not changed since then.

4.5 Collaboration

In order to ensure effective sampling across all fleets and minimise possibilities of duplication of effort, coordination will be organised through the North Sea and western Regional Planning Groups (RPGs), which will meet in 2004 and 2005. The RPGs should ensure collaboration and discuss where data can be pooled and procedures for improving the sampling programme arranged. Communication will also be held with coordinators of programmes covering foreign vessels landing into the UK and those involved in sampling from UK vessels abroad.

4.6 Discard sampling costs

For full detail see individual fiches – a summary of the costs is included in Annex 1.A

UK PROGRAMME FOR THE COLLECTION AND MANAGEMENT OF FISHERIES DATA IN 2005

5. Chapter III, F: Collection of data concerning the catches per unit of effort and/or effective effort of specific commercial fleets.

5.1 Minimum programme

Landings and effort data collected under Modules D & E is used to derive CPUE data for a wide number of UK fleets. This data associated with length and age samples from selected fleets has been used as tuning fleets by the ICES Working Group on the Demersal Stocks of North Sea, Skaggerak and Kattegat (WGNSSK), the Working Group on the Assessment of Southern Shelf Demersal Stocks (WGSSDS), the Working Group on the Assessment of Northern Shelf Demersal Stocks (WGNSSDS) and the Working Group on Nephrops Stocks (WGNEPH). A review of the utility of CPUE (tuning) data collected by national programmes was carried out by the STECF subgroup on Research Needs (SGRN) in March 2003. SGRN recommended that four fleets should be no longer be funded under the MP and these fleets have been moved to the EP. The SGRN recommended that sample collection under the MP should be maintained for the fleets listed below (Table 5.1). However, a number of these fleets have declined to a level where it is no longer possible to provide adequate samples for tuning purposes. It is proposed that in 2005 these fleets will not be sampled and a derogation will be requested. The fleets affected are:

Minimum Programme

- | | |
|-------------------------------------------------|------------------------------------|
| • English seiners (ENGSEI), cod IV | <i>derogation requested</i> |
| • UK beam trawlers (UKBT North Sea), sole IV | <i>derogation requested</i> |
| • UK beam trawlers (UKBT North Sea), plaice IV | <i>derogation requested</i> |
| • Scottish Seiners (SCOSEI) west coast, whiting | <i>derogation requested</i> |
| • Scottish light trawlers (SCOLTR) | <i>derogation requested</i> |
| • Scottish Nephrops trawlers (SCONTR) | <i>derogation requested</i> |

Extended Programme

- English seiners (ENGSEI), haddock IV
- English seiners (ENGSEI), whiting IV
- English trawlers (ENGTRL) haddock IV
- English trawlers (ENGTRL) whiting IV

TABLE 5.1. UNITED KINGDOM CPUE DATA

(note: fleets highlighted and in italics will no longer be sampled)

North Sea & VIId

Fleet	definition (gear)	species	Recommended funding by SGRN		
			MP	EP	N
Scottish trawlers (SCOTRL)	Heavy otter trawl (100mm mesh)	Cod (IIIa,IV,VIId)	x		
Scottish trawlers (SCOTRL)	Heavy otter trawl (100mm mesh)	Haddock (IIIa,IV)		x	
Scottish trawlers (SCOTRL)	Heavy otter trawl (100mm mesh)	Whiting (IV,VIId)		x	
Scottish light trawlers (SCOLTR)	Light otter trawl (100mm mesh)	Cod (IIIa,IV,VIId)	x		
Scottish light trawlers (SCOLTR)	Light otter trawl (100mm mesh)	Haddock (IIIa,IV)	x		
Scottish light trawlers (SCOLTR)	Light otter trawl (100mm mesh)	Whiting (IV,VIId)	x		
Scottish seiners (SCOSEI)	Seine	Cod (IIIa,IV,VIId)	x		
Scottish seiners (SCOSEI)	Seine	Haddock (IIIa,IV)	x		
Scottish seiners (SCOSEI)	Seine	Whiting (IV,VIId)	x		
English trawlers (ENGTRL)	Otter trawl (100mm)	Cod (IIIa,IV,VIId)	x		
<i>English trawlers (ENGTRL)</i>	<i>Otter trawl (100mm)</i>	<i>Haddock (IIIa,IV)</i>		x	
<i>English trawlers (ENGTRL)</i>	<i>Otter trawl (100mm)</i>	<i>Whiting (IV,VIId)</i>		x	
<i>English seiners (ENGSEI)</i>	<i>Seine</i>	<i>Cod (IIIa,IV,VIId)</i>	x		
<i>English seiners (ENGSEI)</i>	<i>Seine</i>	<i>Haddock (IIIa,IV)</i>		x	
<i>English seiners (ENGSEI)</i>	<i>Seine</i>	<i>Whiting (IV,VIId)</i>		x	
<i>UK beam trawlers (UKBT North Sea)</i>	<i>Beam trawl (100 or 110mm)</i>	<i>Sole (IV)</i>	x		
<i>UK beam trawlers (UKBT North Sea)</i>	<i>Beam trawl (100 or 110mm)</i>	<i>Plaice (IV)</i>	x		
UK beam trawlers (UKBT Eastern Channel)	Beam trawl (100 or 110mm)	Sole (VIId)	x		
English otter trawl (UKOT Thames Estuary)	Otter trawl	Sole (IVc west)	x		
English otter trawlers (UKTR Eastern Channel)	Otter trawl	Plaice (VIId)	x		

UK PROGRAMME FOR THE COLLECTION AND MANAGEMENT OF FISHERIES DATA IN 2005

Western region

Fleet	definition (gear)	species	Recommended funding by SGRN		
			MP	EP	N
UK<24m Beam trawlers (Western Channel)	Beam trawl	Sole (VIIe)	x		
UK>24m Beam trawlers (Western Channel)	Beam trawl	Sole (VIIe)	x		
UK Beam trawlers (Western Channel)	Beam trawl	Plaice (VIIe)	x		
UK otter trawlers (Western Channel)	Otter trawl	Sole (VIIe)	x		
UK otter trawlers (Western Channel)	Otter trawl	Plaice (VIIe)	x		
UK Beam trawlers (Celtic Sea)	Beam trawl	Sole (VIIfg)	x		
UK Beam trawlers (Celtic Sea)	Beam trawl	Plaice (VIIfg)	x		
UK Otter trawlers (Celtic Sea)	Otter trawl	Plaice (VIIfg)	x		
UK West coast otter trawlers(VIIe-k)	Otter trawl	Cod (VIIe-k)	x		
UK Beam trawlers (Irish Sea)	Beam trawl	Sole (VIIa)	x		
UK Beam trawlers (Irish Sea)	Beam trawl	Plaice (VIIa)	x		
UK Otter trawlers (Irish Sea)	Otter trawl	Sole (VIIa)	x		
UK Otter trawlers (Irish Sea)	Otter trawl	Plaice (VIIa)	x		
UK Otter trawlers (Irish Sea)	Otter trawl	Cod (VIIa)	x		
UK Otter trawlers (Irish Sea)	Otter trawl	Whiting (VIIa)	x		
Northern Ireland, Jan-April	Otter/pelagic trawl	Cod (VIIa)	x		
Northern Ireland, Oct-Dec	Otter/pelagic trawl	Cod (VIIa)	x		
Northern Ireland Otter	Otter trawl	Whiting (VIIa)	x		
Scottish Trawlers (SCOTRL) west coast	Otter trawl	Cod (Via)	x		
Scottish Trawlers (SCOTRL) west coast	Otter trawl	Haddock (Via)	x		
Scottish Seiners (SCOSEI) west coast	Seines	Cod (Via)	x		
Scottish Seiners (SCOSEI) west coast	Seines	Haddock (Via)	x		
<i>Scottish Seiners (SCOSEI) west coast</i>	<i>Seines</i>	<i>Whiting (VIIa)</i>	<i>x</i>		
Scottish light trawlers (SCOLTR)	Otter trawls	Cod (Via)	x		
Scottish light trawlers (SCOLTR)	Otter trawls	Haddock (Via)	x		
<i>Scottish light trawlers (SCOLTR)</i>	<i>Otter trawls</i>	<i>Whiting (VIIa)</i>	<i>x</i>		
Scottish Nephrops trawlers (SCONTR)	Nephrops trawls (80 mm + SQMP)	Cod (Via)	x		
Scottish Nephrops trawlers (SCONTR)	Nephrops trawls (80 mm + SQMP)	Haddock (Via)	x		
<i>Scottish Nephrops trawlers (SCONTR)</i>	<i>Nephrops trawls (80 mm + SQMP)</i>	<i>Whiting (VIIa)</i>	<i>x</i>		

5.1.1 Method

Fishing effort (days fished), ICES rectangle and gear type are recorded by all skippers in UK fleets allowing the computation of CPUE at the level of month, rectangle and gear (Appendix XII). The data are a large subset of the commercial landings and age composition data used in the ICES assessments. The CPUE have been estimated as crude ratios of landings to fishing effort in days or hours fished or hours*engine power, aggregated over quarters or averaged over months to remove seasonal signals. The commercial CPUE data have contributed significantly to the final XSA model fit for cod, whiting, haddock, sole, and plaice.

Sampling from these tuning fleets involves the collection of length and age data as well as Fishing effort (days or hours fished) The biological data required for these tuning indices are collected as part of fully integrated market sampling programmes which are detailed in Chapter III, H and I. Currently it is not possible to cost these data collection programmes separately as samples for all species are taken in all ports sampled, the cost of an individual sample cannot be applied or administered separately.

The species by area and numbers of fish aged to obtain these tuning indices are given in Table 7.1. The costs associated with this element of the programme are included in the costs under Section 7 dealing with Market Sampling for age and length (See summary costs listed in table Annex 1.D).

5.2 Extended programme

Two fleets recommended for funding under the EP rather than the MP following the review of the utility of tuning fleets by SGRN are listed below:

- Scottish heavy trawlers for haddock in IIIa and IV,
- Scottish heavy trawlers for whiting in IIIa and IV

However, the cost of these activities is minimal (approximately 7400 euros in a full year) and although the work has now been withdrawn from the Minimum Programme FRS do not propose to seek funding under the Extended Programme. Any costs will be borne nationally.

UK PROGRAMME FOR THE COLLECTION AND MANAGEMENT OF FISHERIES DATA IN 2005

5.3 Collaboration

No international collaboration is anticipated in the collection of data

5.4 Costs for studies of commercial fleet CPUE indices

See summary table Annex 1.C for separately identifiable costs; most costs are included in the costs under Section 7 dealing with market sampling.

6. Chapter III, G Eligibility of the scientific evaluation surveys of stocks

The following sections detail those surveys included in the minimum and extended programmes under G (1) and (2). The surveys have been given the normal names used nationally. The name used in Appendix XIV has been included in brackets. It should be noted that in some cases, two or more of the surveys given here belong to a single survey heading in Appendix XIV. It is important to note that some priority 2 surveys provide important minimum programme data for priority 1 species under Chapter III, I (see section 8). In particular, these surveys are used to provide biological parameters (fecundity, maturity and growth curves) for a number of primary commercial species. In addition some of these priority 2 surveys provide the ONLY fishery independent data for tuning some assessments.

6.1 Minimum programme

The UK will carry out all surveys classified with priority 1 in Appendix XIV of Regulation 1639/2001) and will try to ensure continuity with previous survey designs to maintain input to ICES Assessment Working Groups. Full descriptions of the surveys have been provided in the UK bid for 2002 & 2003. In 2003, SGRN recommended that if a survey has (a) an established time series, (b) an input to assessments and (c) surveys stocks within a Recovery plan, it should qualify for priority 1 status. This applies to the two DARD groundfish surveys that are noted below.

(A) UK priority 1 surveys (Appendix XIV): North Sea & Eastern Channel & ICES Area II

- 6.1.1 English International Bottom Trawl Survey; 1st Q; IV, IIIa (IBTS 1st quarter)
- 6.1.2 English International Bottom Trawl Survey; 3rd Q; IV, IIIa (IBTS 3rd quarter)
- 6.1.3 Scottish International Bottom Trawl Survey; 1st Q; IV, IIIa (IBTS 1st quarter)
- 6.1.4 Scottish International Bottom Trawl Survey; 3rd Q; IV, IIIa (IBTS 3rd quarter)
- 6.1.5 English Beam Trawl Survey; 3rd Q; IVc, VIId (BTS)
- 6.1.6 English Demersal Young Fish Survey; 3rd /4th Q; IV coastal (Demersal Young Fish Survey)
- 6.1.7 Scottish NS Herring Acoustic Survey (NS Herring Acoustic Survey)
- 6.1.8 Atlanto-Scandian herring survey (ASH).

UK participation in the ASH survey is required under the MP despite the lack of scientific evidence that the survey contributes significantly to the assessment of herring or blue whiting. The UK will therefore collaborate with other countries in supporting the survey based on its proportion of the TAC.

(B) UK priority 1 surveys (Appendix XIV): North East Atlantic Area & Western Channel

- 6.1.9 Scottish Western IBTS; 4th Q; VIa, VII (Western IBTS 4th quarter)
- 6.1.10 English Western IBTS; 4th Q; VII (Western IBTS 4th quarter)
- 6.1.11 Irish Sea & Bristol Channel Beam Trawl Survey; 3rd Q; VIIa,f,g (3rd quarter ISBCBTS)
- 6.1.12 Scottish Spawning/pre-spawning Herring Acoustic Survey; 2nd Q; VIa; (2nd quarter Spawning/prespawning herring acoustic survey)
- 6.1.13 Northern Irish Spawning/pre-spawning Herring Acoustic Survey; 3rd Q; VIIa,g (Spawning/prespawning herring acoustic survey)
- 6.1.14 Northern Irish Q1 and Q4 groundfish surveys (DARD groundfish).

Following the criteria for surveys that cover Recovery Stocks, these two surveys are included in the Minimum Programme although it is noted that the revisions to the Regulations may not come into force until 2006. STECF subgroup on research Needs (SGRN Dec 2002) noted that there were two surveys not one as stated in Regulation 1639/2001. The DARD groundfish surveys have been carried out in March & October since 1991. The March and October surveys provide WGNDS with indices of abundance for cod, whiting and haddock that have contributed substantially to the XSA assessment of these species carried out by ICES. The DARD March and October surveys are currently the only tuning data used by ICES for all age classes of

UK PROGRAMME FOR THE COLLECTION AND MANAGEMENT OF FISHERIES DATA IN 2005

haddock, and for cod of age class 1 and older, in Division VIIa. They were also an important source of information for establishing closed areas under the Irish Sea cod recovery programme.

6.2 Extended programme

The UK will carry out all surveys classified with priority 2 in Appendix XIV of Regulation 1639/2001 and will ensure continuity with previous survey designs to maintain input to ICES Assessment Working Groups. Full descriptions of the surveys have been provided in the UK bid for 2002 & 2003.

(A) UK priority 2 surveys (Appendix XIV). North Sea & Eastern Channel & ICES Area II

6.2.1 Scottish Underwater Television Surveys; 2nd Q; IVa,b; (Nephrops TV survey)

Although these surveys have been assigned priority 2 status the Fladen TV survey presently provides the main information for assessing this internationally fished stock, the largest known Nephrops stock. Furthermore, of the remaining North Sea stocks, the Moray Firth is the one giving most cause for concern and its assessment benefits from the additional input of TV data. It is considered that the surveys should be reviewed for priority 1 status.

(B) UK priority 2 surveys (Appendix XIV). North East Atlantic Area & Western Channel

6.2.2 Western Channel Beam Trawl Survey; 4th Q; VIIe, 4th Q (WCBTS)

This survey fulfils the requirements of a Priority 1 survey since it is part of an ICES co-ordinated survey series and provides indices that are used in the ICES WGSSDS.

6.2.3 Scottish International Bottom Trawl Survey; 1st Q; VI & VIIa, (Scottish West Coast, Young Fish Survey)

This survey is used to provide biological parameters for other priority 1 species. This survey currently provides the only tuning data for VIa cod and whiting. Since VIa cod is under a recovery plan, the revised criteria for priority 1 surveys should apply to this survey and consequently it would be expected to be included in the MP in future bids.

6.2.4 DARD herring larvae; Q4; VIIa; (DARD herring larvae)

6.2.5 DARD MIK-net; Q2; VIIa; (DARD MIK-net)

6.2.6 DARD Nephrops; Q2 & Q3; VIIa; (DARD Nephrops)

6.2.7 Irish Sea Egg production surveys; 1st & 2nd Q; VIIa, (Egg production surveys), 2005.

6.2.8 Scottish Underwater Television Surveys, 2nd & 4th Q; VIa,

Although this survey was previously carried out in the 1st and 3rd quarters, SGRN accepted that the revised survey times were more appropriate to the sea conditions and that the change did not affect the continuity of the survey or negatively affect the survey results.

6.3 Collaboration

International collaboration will be undertaken to ensure full coverage of the survey areas and utilisation of survey data either through combined indices or through estimation of individual age compositions required for assessment Working Groups. This will involve participation at ICES International Bottom Trawl SG for the NS and Western regions; participation at the ICES Beam Trawl Study Working Group for integration of the Q3/Q4 beam trawl surveys; participation in the ICES Planning Group on Commercial catch, discards and biological samples for integration of maturity and other biological information collected on surveys and in the EU funded Regional Planning Groups (PGAs).

6.4 Costs for research vessel cruises (Chapter III, G) and most biological parameters (Chapter III, I)

See the summary of costs in table Annex 1.C for the minimum programme and table Annex 1.F for the extended programme.

UK PROGRAMME FOR THE COLLECTION AND MANAGEMENT OF FISHERIES DATA IN 2005

7. Chapter III, H: Biological sampling of catches: composition by age and by length

All stocks identified in Regulation 1639/2001 Appendix XV will be sampled unless the UK landings are below the threshold identified in the Regulation. Exceptions to this are cod in ICES area I & II (see exemption below section 7.2). The UK has previously undertaken some sampling for length and age on a fleet basis. Following the recommendation by SGRN (2003) to plan collection by fleet segment, the UK will continue to sample at this level for the fleets previously specified (see section 5.1). The intention will be to sample for length and age at Precision level 1 except for stocks that are subject to a recovery programme where precision level 2 will be used. If this is not possible, sampling will be at the levels specified in Appendix XV. Foreign landings into the UK have been included in calculating the numbers of samples and otoliths to collect. However, in cases where foreign landings are transhipped immediately by lorry, it may not be possible to obtain samples. In these cases, it has been agreed that the country of first sale should carry out the sampling (SGRN Dec 2002). Collaboration with coordinators from other countries has been undertaken to ensure compliance with this and a bi-lateral agreement reached with Belgium (see Annex 3).

The sampling programme detailed in this section fully integrates the market sampling for length and age composition and the provision of fleet based commercial CPUE indices. It is currently not possible to separate the costs of these two integrated programmes so the description and costs presented here cover sampling schemes for the data required for both Chapter III, F and H. Sampling is based on fleets and regions, which are used to construct, age length keys. Otoliths are obtained on a length-stratified basis. Otoliths are subsequently read in the laboratory by CEFAS, FRS and DARD in order to construct seasonal regional age/length keys by for each species. The key is applied to a raised length frequency to produce fleet numbers at age, etc. for sampling area. A subsequent aggregation of regions allows the production of data summaries on any combination of strata.

England: Biological sampling of catches to assess their composition by age and length is conducted at fish markets at ports in England and Wales mainly by SFI staff based at or near the coast. CEFAS staff from Lowestoft assists as required for the local and seasonal scale of landings.

Scotland: The Marine Laboratory Aberdeen operates an integrated sampling system in Scotland whereby all major demersal, pelagic and nephrops stocks are sampled by the same team as the opportunity arises. This method involves sending two person teams or, where safety and health considerations allow, one person to relevant ports and points of first sale to sample all available species. Whilst this method is driven by the main species landed e.g. cod, haddock, whiting, saithe, herring, mackerel and *Nephrops* the system allows sufficient flexibility to increase sampling on minor species if landings of major species are curtailed. Thus sampling is attuned to the dynamic nature of Scottish fishing and landings. The basic sampling strategy is monthly aimed to provide commercial fleet CPUE indices for the primary species however, not all ports and areas are covered each month, sampling by quarter is ensured for all demersal species and for pelagic species during the fishing seasons.

Northern Ireland: Northern Ireland currently carries out length and age measurements for landings of the following species listed in the regulation: cod, whiting, haddock in VIIa and VIa, and herring and Nephrops in VIIa. Sampling stratification is Level 3 (Sub-Area: Commission Appendix I), quarterly and by gear type (Pelagic whitefish trawl; Demersal trawl; Pelagic herring trawl) according to the segregation of markets or landing sites and information recorded on EC log sheets for sampled vessels. The great majority of samples collected in Northern Ireland are for Division VIIa landings. Data are currently not collected on other species including hake, anglerfish, sole and saithe as NI landings from these stocks contribute relatively little to the total international landings. During 2002 & 03, sampling for length was extended to include plaice, skates and rays. At present, otoliths are collected by purchasing samples of fish from markets. Length composition data for herring and Nephrops are also obtained from samples purchased from designated fishermen and factories. These costs are included under "consumables" together with consumable costs for mounting otoliths and fuel costs for port visits. Other costs are calculated on the basis of 70 visits to demersal fish markets per year to achieve Minimum Programme sampling levels for length and age.

UK PROGRAMME FOR THE COLLECTION AND MANAGEMENT OF FISHERIES DATA IN 2005

7.1 Minimum programme

7.1.1 Sampling Fish Markets for Length and Age; stocks specified in Appendix XV

The UK minimum level sampling requirements based on Appendix XV are detailed in Table 7.1 by species by area. In addition Table 7.1 shows average annual reported landings (UK and foreign registered vessels) into UK and Norway by all EU flagged vessels irrespective of nationality for the period 2001-2003 for the species included under the MP in Appendix XV. The UK landings have been compared to the reference level by species and area to select those species to be included in the minimum programme. In addition the species which require sampling to provide commercial CPUE series (Section 5 Article 8) are indicated in the same column. Where catches exceed 10% or 200t samples for age will be included in the programme, where catches exceed 5% or 100t sampling for length only will be carried out. For the purposes of this proposal it has not been possible to estimate if those catches combined internationally with other unsampled catch fall below these levels contribute to more than 15% of the total catch. This will be investigated at the proposed international co-ordination meetings and if required the programme will be amended in future. For species that require commercial CPUE indices (Section 5 Chapter III,F) these species will be sampled at the level previously sampled to maintain historical consistency for CPUE tuning series unless landings of the fleets have been reduced to a level which no longer justify sampling at the level of tuning fleet. This is the case for plaice and sole in the North Sea following the loss of the English beam trawl fleet and for seine caught cod in the English North Sea seine fleet.

Sampling for skates and rays has previously been carried out under mixed species categories. Currently the sampling level is specified in Table 7.1 under the mixed skates and rays. An EU funded project DELASS (99/055) provided species identification keys and sampling at species levels will be continued in 2005 in the UK.

The UK currently samples angler fish (*Lophius piscatorius*) using otoliths whereas many other countries use ilicia. SGRN (2003) supported this approach in view of the Commission funded contract (*Distribution and Biology of anglerfish and megrim in waters to the west of Scotland – Study Contract 98/096*) which found that otoliths were more reliable than ilicia. A workshop on age reading of anglerfish is proposed for 2004 and in the absence of an agreed strategy on ageing, the UK will continue to collect and read otoliths

UK PROGRAMME FOR THE COLLECTION AND MANAGEMENT OF FISHERIES DATA IN 2005

Table 7.1 UK sampling programme - Sampling levels at age and length by species for Chapter III, F CPUE Indices and Chapter III, H Sampling at age and length

Species	Area	Average Total UK Landings 2001-03	Minimum programme		Proposed		
			Lengths	ages	Lengths	ages	
ICES AREA II							
Atlanto-Scandian Herring	Clupea harengus	Ila, V	2824	141	71	150	75
North Sea & Eastern Channel ICES AREAS IV, VIId							
Herring	Clupea harengus	Ila,IVab - this has to 4a	27983	1399	700	1400	700
Seabass	Dicentrarchus labrax	IV, VIId	237	59	59	75	60
Cod	Gadus morhua	IV, VIId	15128	3782	1891	50000	13200
Megrim	Lepidorhombus whiffiagonis	IV,VIId	1568	157	78	200	78
Anglerfish (1)	Lophius piscatorius	IV,VIId	8346	1043	1043	1100	1100
Haddock	Melanogrammus aeglefinus	IV, VIId	34585	8646	4323	90000	8450
Whiting	Merlangius merlangus	IV, VIId	8941	447	1118	60000	4600
Lemon sole	Microstomus kitt	IV,VIId	1674	209	209	2500	300
Norway lobster (Functional Unit)	Nephrops norvegicus	IV	12133	97064		97000	
Scallops	Pecten spp.	VIId	1720	430		450	
Plaice	Pleuronectes platessa	IV	3321	332	166	(3)	
Plaice	Pleuronectes platessa	VIId	776	1552	388	19200	2400
Saithe	Pollachius virens	IV, VIId	6018	1505	752	12200	6000
Turbot	Psetta maxima	IV, VIId	188	24	24	(3)	
Other Rays & Skates (2)	Rajidae	IV,VIId	1330	67		3000	
Brill	Scophthalmus rhombus	IV, VIId	88	5	5	(3)	
Sole	Solea solea	IV	323	81	40	7000	1200
Sole	Solea solea	VIId	1004	2008	502	19200	2400
Horse mackerel	Trachurus spp.	IV,VIId	44	4	1	(3)	
NE Atlantic & Western Channel ICES AREAS II, V, VI, VII (exc d) VIII IX X XII XIV							
Crab	Cancer pagurus	all areas	10860	2715		2750	
Herring	Clupea harengus	VIIa	3076	722	361	750	400
Herring	Clupea harengus	VIIa	14430	154	77	450	250
Roundnose Grenadier	Coryphaenoides rupestris	all areas	661	33	661	2000	(4)
Seabass	Dicentrarchus labrax	all areas (ex IXa)	320	80	16	80	25
Cod	Gadus morhua	VIIa, VIB, VIII, XII, XIV	1499	375	75	8500	2900
Cod	Gadus morhua	VIIa	1199	280	56	10000	2100
Cod	Gadus morhua	VIIb-k	1047	262	52	5000	1200
Lobster	Homarus gammarus	all areas (NE Atlan)	539	27		30	
Megrim	Lepidorhombus whiffiagonis	Vb,VI,XII,XIV, VII,VIIIabcde	2174	1087	217	17000	1500
Anglerfish (1)	Lophius piscatorius	Vb,VI,XII,XIV VII,VIIIabde	4362	2181	545	16000	1100
Haddock	Melanogrammus aeglefinus	VIIa, VIB, VIIa, VII, VIII, XII, XIV	8018	401	802	35000	4100
Whiting	Merlangius merlangus	VIIa	349	175	35	2500	600
Whiting	Merlangius merlangus	VIIb-k	1383	692	138	9600	300
Whiting	Merlangius merlangus	Vb, VI	1211	606	121	7000	2000
Hake	Merluccius merluccius	IIIa,IV,VI,VII,VIIIa b,VIIIc,IXa	2002	1001	200	10000	(4)
Blue whiting	Micromesistius poutassou	I-IX,XII,XIV	11548	557	289	557	289
Ling	Molva molva	all areas	4252	213	106	213	106
Norway lobster(Functional Unit)	Nephrops norvegicus	VI	10458	83664		84000	
Norway lobster(Functional Unit)	Nephrops norvegicus	VII	5079	20316		20400	
Plaice	Pleuronectes platessa	VIIa	1120	4480	1120	24000	2400
Plaice	Pleuronectes platessa	VIIe	914	3656	914	25000	2400
Plaice	Pleuronectes platessa	VIIIfg	327	1308	327	25000	2400
Saithe	Pollachius virens	Vb,VI,XII,XIV	2151	1076	215	2500	1400
Other Rays & Skates (2)	Rajidae	all areas	5210	130		2500	
Mackerel	Scombrus scomber	II,IIIa,IV,V,VI,VII, VIII,IX (exc. VIIIc, IXa)	110244	5512	2756	11500	4500
Sole	Solea solea	VIIe	305	153	38	12000	2400
Sole	Solea solea	VIIa	862	3448	862	12000	2400
Sole	Solea solea	VIIIfg	878	3512	878	12000	2400
Highly migratory species, Atlantic, Indian, Pacific Oceans							
Porbeagle	Lamna nasus	all areas	25	30		35	
Blue shark	Prionace glauca	all areas	3	5		5	
Sharks SPP	Squalidae	all areas	300	150		150	

UK PROGRAMME FOR THE COLLECTION AND MANAGEMENT OF FISHERIES DATA IN 2005

7.1.2 Exemptions: No samples will be collected from cod in ICES area I, II. These catches are taken by vessels that are at sea for several months and move between ICES areas. All landings are of processed fish. It would not be possible to sample without prohibitive cost and the low UK landings in relation to the total mean that it is unlikely that the UK samples would improve the assessment of this stock. SGRN 2002 noted this exemption.

7.1.3 Sampling Discards for Length and Age; stocks specified in Appendix XV

The UK discard sampling programmes incorporate the estimation of length distributions and the collection of otoliths from the discarded size groups of all target species so far as conditions at sea permit. This is in accordance with H(1)e. Provided that sufficient otoliths are successfully collected, age-length keys are generally prepared quarterly by ICES division in accordance with the requirement in H(1)e for sampling lengths and ages of discards as specified in Appendix XII for commercial landings.

7.2 Extended programme

7.2.1 Extensions regarding market sampling for length and age

No funding is requested

7.2.2 Extensions regarding discards

UK discard sampling estimates the annual composition in length of all fish species caught on the sampled fleets during the year, so far as safe working time on deck permits. The costs of the EP are not therefore significantly greater than the cost for the MP and currently no additional funding is requested

7.3 Collaboration

In 2002 foreign landings accounted for 13.4% of all landings in the UK by weight (15% by value). 61,6000 tonnes (£55m) were landed into Scotland and 10,700 tonnes (£19.8m) was landed into England and Wales. The main EU fleets landing in the UK are Anglo-Spanish and Belgian fleets unloading in English west coast ports and Irish, French and Spanish fleets landing in Scottish west coast ports. The majority of these landings are overlanded for first sale in Spain and Belgium. It has been agreed that these landings should be sampled at first sale rather than port of landing. Discussions will be held with IEO and AZTI Spain and with FRS Belgium in order to ensure compliance over sampling these landings. Where it is possible to sample the landings, e.g. French landings on the Scottish west coast, a programme of sampling has been implemented. The entire sampling of 'foreign' landings will be co-ordinated internationally at the ICES Planning Group on Commercial Catch, Discards and Biological Sampling (PGCCDBS) and at RPGs. The UK will also participate in the otolith exchanges and workshops on improving ageing of key species (whiting) that will be held in 2005.

7.4 Costs for Sampling Landings for Length and Age (Chapter III, H) including sampling for Fleet based tuning indices (Chapter III, F)

See the summary of costs at table Annex 1.D

8. Chapter III, I: Other biological sampling

The UK will sample species indicated in Appendix XVI unless exempted on the basis of landings. Sampling will be undertaken at an annual, triennial or six-annual cycle as specified. Data will be collected for sexes separately where specified in the Regulation.

8.1 Minimum programme

The collection of data relating to growth by length and weight and maturity stage for species covered by Appendix XVI will be obtained using two main methods: -

a) Use of research vessel surveys

UK PROGRAMME FOR THE COLLECTION AND MANAGEMENT OF FISHERIES DATA IN 2005

A number of research cruises carried out under Chapter III, G - Section 6 (above) will be used to provide samples for estimation of biological parameters for species covered by these surveys. Data for those groundfish species where the market practice is to land fish gutted with gonads removed (gadoids) will be collected on research cruises. In the North Sea the IBTS quarter one survey will provide data at the important time of year, when most of the gadoids are mature and data on the maturity ogives can be collected. Data from this survey will be co-ordinated through the ICES IBTS WG to obtain growth and other biological parameters. In the Western area the IBTS (WCGFS) (6.1.9 & 10), the Scottish 1st quarter IBTS survey (6.2.3) and the DARD 1st quarter Ground fish survey (6.1.14) as well as other opportunistic cruises will be used to provide biological parameters. It should be noted that these priority 2 surveys for funding under the minimum programme (Section 6 Article 9) are need for minimum programme species under this article. For herring the ICES co-ordinated acoustic surveys (6.1.7, 6.1.12, and 6.1.13) will be used for biological parameter estimation. The ICES co-ordinated groundfish surveys will be used to provide data for growth and fecundity data for mackerel and horse mackerel.

b) Use of market sampling for flat fish and shellfish

Port sampling will be used in addition to research vessel surveys for shellfish and for other species covered by Appendix XVI where the market practice is to land fish live or gutted with gonads retained. Data will be collected in this way for crabs, lobsters, sole, plaice, lemon sole, turbot, brill and megrim (*L. whiffiagonis*).

Data for sex ratios will be obtained from commercial landings where possible.

8.1.1 Plan for sampling biological parameters 2005-2007

The Commission requested that MS set out a sampling plan for the period 2005-2007 in which they identified

- i) which species are to be sampled over the period
- ii) which biological parameters have been updated in the period 2002-2004
- iii) which parameters it is proposed to update in the period 2005-2007
- iv) whether the studies will involve international cooperation

The questions relating to updating of parameters (ii to iv above) are dependent on agreement with other countries and the appropriate species Working Groups. It has not yet been possible to organize this collaboration. However, a start will be made at the RPGs in 2004 which could affect the 2005 programme. In discussing this issue, ICES PGCCDBS stated that "*shared data would be expected to provide improved indices. This is only appropriate if all countries are collecting data in a standard way. There was some uncertainty that this was the case and it was felt that combination of data for which there was no quality control may be of limited scientific value. For instance, one key problem is differences in interpretation of maturity stages and the time of the year used by different countries. There is a need to agree standardisation between countries and as was recommended for age, it was suggested that exchanges and or workshops should be held between countries. For maturity, the spawning period is the best time to measure maturity but this is not always possible if surveys are used to collect data as not all surveys occur at the appropriate time of the year. Another problem is the need to coordinate sampling over the triennial period. There is no group dealing directly with the methodology of standardising the collection and measurement of biological parameters*". The PGCCDBS **recommended** that the ICES SG GROMAT should take on this responsibility and this should then be included in the Quality Handbooks for each stock. The RPG should make an inventory of all standard methods for individual stocks to ensure comparability between countries. However, SG GROMAT will only meet next in 2005, in the meantime it was recommended that the IBTS standard methodology (ICES CM 1999/D:2) should be adopted.

In the case of shellfish, the Commission requires revision to growth parameters every three years in the NE Atlantic for crab and lobster. There is currently no validated method for routine analysis of age in these species. Experimental methods using lipofuscin accumulation studies have been undertaken and the results evaluated but this method is not suitable for routine ageing. Conventional ageing will require intensive tagging studies. These are extremely expensive and will not produce results for several years. In order to be successful, these programmes will require international cooperation and this level of collaboration has not been agreed. It is hoped that this issue can be discussed at the Regional Planning Group meetings in 2004 but this will not be in time to develop a programme before 2006. **In view of these difficulties, the UK requests a derogation from the requirement for a three yearly update for crabs and lobsters and suggests that an international pilot study be undertaken before the requirement for routine age data is required.**

UK PROGRAMME FOR THE COLLECTION AND MANAGEMENT OF FISHERIES DATA IN 2005

Until there is international agreement, it is not possible to indicate which species will be updated in the period 2005-07. Nevertheless, the list of species for which the UK will obtain samples is indicated in the table below:

EU Data Regulation Collection of biological parameters

1 annual
2 international cooperation required

Species	Area	age			maturity			weight			Recovery stock	Tuning
		2005	2006	2007	2005	2006	2007	2005	2006	2007		
Atlanto-Scandian Herring	Ila, V											
Herring	Ila,IVab	1	1	1	1	1	1	1	1	1		
Seabass	IV, VIIId	2	2	2	2	2	2	2	2	2		
Cod	IV, VIIId	1	1	1	1	1	1	1	1	1	Y	X
Megrims	IV, VIIId	1	1	1	1	1	1	1	1	1		
Anglerfish (note 1)	IV, VIIId	1	1	1	1	1	1	1	1	1		
Haddock	IV, VIIId	1	1	1	1	1	1	1	1	1		X
Whiting	IV, VIIId	1	1	1	1	1	1	1	1	1		
Lemon sole	IV, VIIId	1	1	1	1	1	1	1	1	1		
Norway lobster (Functional Unit)	IV				1			1				X
Scallops	VIIId											
Plaice	IV	2	2	2	2	2	2	2	2	2		X
Plaice	VIIId	1	1	1								X
Saithe	IV, VIIId	1	1	1	1	1	1	1	1	1		
Turbot	IV, VIIId	2	2	2	2	2	2	2	2	2		
Other Rays & Skates 2	IV, VIIId				2	2	2	2	2	2		
Brill	IV, VIIId	2	2	2	2	2	2	2	2	2		
Sole	IV	1	1	1	1	2	2	1	2	2		X
Sole	VIIId	1	1	1	1	2	2	1	2	2		X
Crab	all areas											
Herring	VIIa	2	2	2	2	2	2	2	2	2		
Herring	VIIa	1	1	1	1	1	1	1	1	1		
Roundnose Grenadier	all areas	2	2	2	2	2	2	2	2	2		
Seabass	all areas (ex IXa)	2	2	2	2	2	2	2	2	2		
Cod	VIIa, VIIb, VIII, XII, XIV	1	1	1	1	1	1	1	1	1	Y	X
Cod	VIIa	1	1	1	1	2	2	1	2	2	Y	X
Cod	VIIb-k	1	1	1	1	2	2	1	2	2		X
Megrims	Vb, VI, XII, XIV, VII, VIIIabcde	1	1	1	1	1	1	1	1	1		
Anglerfish (note 1)	Vb, VI, XII, XIV, VII, VIIIabde	1	1	1	1	1	1	1	1	1		
Haddock	VIIa, VIIb, VIIc, VIIId, VIIe, VIIIf, VIIIg, VIIId, VIIId	1	1	1	1	1	1	1	1	1		X
Whiting	VIIa	1	1	1	1	1	1	1	1	1		X
Whiting	VIIb-k	2	2	2	2	2	2	2	2	2		
Whiting	Vb, VI	1	1	1	1	1	1	1	1	1		
Hake	IIIIa, IV, VI, VII, VIIIab, VIIIc, IXa	2	2	2	2	2	2	2	2	2	Y	
Blue whiting	I-IX, XII, XIV	2	2	3								
Ling	all areas	2	2	2	2	2	2	2	2	2		
Norway lobster(Functional Unit)	VI				1			1				
Norway lobster(Functional Unit)	VII											
Plaice	VIIa	1	1	1	1	2	2	1	2	2		X
Plaice	VIIe	1	1	1	1	2	2	1	2	2		X
Plaice	VIIIfg	1	1	1	1	2	2	1	2	2		X
Saithe	Vb, VI, XII, XIV	1	1	1	1	1	1	1	1	1		
Other Rays & Skates 2	all areas				2	2	2	2	2	2		
Mackerel	II, IIIa, IV, V, VI, VII, VIII, IX (exc.)	1	1	1	1	1	1	1	1	1		
Sole	VIIe	1	1	1	1	2	2	1	2	2		X
Sole	VIIa	2	2	2	1	2	2	1	2	2		X
Sole	VIIIfg	1	1	1	1	2	2	1	2	2		X

8.2 Extended programme

No funding is currently being applied for under this part of the programme.

8.3 Collaboration

The programme will be co-ordinated internationally at the ICES Planning Group on Commercial Catch, Discards and Biological Sampling (PGCCDBS), RPGs and the ICES IBTS WGs.

8.4 Costs for Collecting Biological Parameters (Chapter III, I) excluding data collected through research vessel surveys and market samples (Chapter III, G and H).

See the summary of costs at table Annex 1.C.

UK PROGRAMME FOR THE COLLECTION AND MANAGEMENT OF FISHERIES DATA IN 2005

Module of evaluation of the economic situation of the sector

9. Chapter IV, J. Collection of economic data by groups of vessels

9.1 Minimum Programme

The UK will be engaging the Sea Fish Industry Authority (SEAFISH) who have historically carried out economic surveys of the fish catching sector. A full economic survey of the UK fleet is scheduled to be carried out in 2004. SGRN commented that the UK should consider initiating a full annual survey of the UK fleet. As such an estimate of the costs involved in such work has been included, but in 2005 it is anticipated that there will be a key need to focus on those sectors of the fleet that are under particular pressures – i.e. the Whitefish fleets around the UK. As such the sampling frame may need to be revised to allow particular regional fleets within the UK to be assessed more accurately, which may affect the cost estimates for the work. Further discussions on this work will be taking place over the summer and a revised financial fiche will be submitted as soon as possible.

In addition work is planned to cover the economic activity of small vessels (10m and under) to assess their level of economic activity and in particular their level of dependence on fishing as a source of income compared with other activities.

10. Chapter IV, K. Gathering of data and the processing industry

The Sea Fish Industry Authority conducted a survey in 2002 on the processing industry in the UK, with a full report having been published. This survey is currently under review prior to being repeated in 2005. As such an estimate of the costs associated with the data collection and processing has been incorporated into a fiche for this work.

11. Article 10 Data Base and Data Access

Fisheries data in the UK are archived in separate databases in Scotland, Northern Ireland, and England for historic reasons. Initiatives are now under way to modernise the major systems in England, Wales, Northern Ireland and Scotland. As part of this work a joint strategy for the development of IT systems in the UK Fisheries Departments is being developed. An integral part of this work is the creation of combined UK databases on fishing activity and biological sampling. These will be the sources of the data to fulfil the requirements for fishing activity and biological data set out in the minimum programme. These databases will be completed within 1-2 years, and as part of its creation the current degree of compatibility between the systems will be improved.

The UK programme for 2005 includes details of the costs involved (€) in maintaining an interim solution to integrate activity data from the current separate systems and the incorporation of the requirements of the Regulation into the final UK activity database. At present there are thus only limited additional costs associated with this development that fall within the remit of the data collection Regulation. The main redevelopment will produce the UK activity data required under the Regulation as a set routine, and thus there will not be any significant level of costs associated with meeting the obligations of the Regulation with regards to activity data.

Additional work is required to bring together the separate scientific data from the institutes in the UK and merge data at an intermediate level. This entails scientific co-ordination to ensure comparability between the respective elements. The costs of this co-ordination work and the building of intermediate scientific databases to enable access as required by the Commission are included in the minimum programme (see 12.2 below).

The resulting datasets will be placed on a server, containing appropriate database software, with suitable security that will then be accessible as required under Article 9(3) of the Regulation. There may be some future costs associated with revising these databases once the methodology and standardised formats for

UK PROGRAMME FOR THE COLLECTION AND MANAGEMENT OF FISHERIES DATA IN 2005

data transmission in response to requests for data are introduced. At the moment these are not anticipated to be significant.

12 Co-ordination

12.1 UK correspondent and internal co-ordination

A UK national correspondent has been appointed to supervise the UK commitment to the data collection programme. There will be sub-co-ordinators, to cover separately the scientific aspects and the fleet, activity, catches, landings and other data aspects. It is estimated that in total this will comprise at least 1 man-year.

12.2 Costs of database, general co-ordination and related scientific work

For the scientific aspects covered in 12.1 above resources of up to 0.5 person years annually will be needed in order to:

- Promote co-ordination and harmonisation of scientific data collection in Scotland, Northern Ireland, England and Wales and ensure collaboration with international coordinators
- Maintain communications and data collation within the UK for transmission to the Commission and other specified parties.
- As necessary, represent the UK at meetings on market sampling, discard sampling, biological sampling, etc.
- Collate cost and administrative information from the different UK organisations involved in the programme.
- Ensure that activities specified under the MP concerning scientific data are being effectively carried out within the UK.

The following meetings will be attended:

INTERNATIONAL COORDINATION 2005		
Destination*	(MO) Meeting organisation	
1/Data collection		3 Sco 3 Eng 1 NI
National co-ordination - 1 meetings per year	1Coord	1 SEERAD
2/ Data collection: Regional co-ordination		
North sea	1Eng	1 Sco 1 Eng
Atlantic (North East)		1 Sco 2 Eng
3/ Planning Groups on data collection		
Planning Group on Commercial Catch Discards and Biological Sampling (PGCCDBS)		
PGCCDBS Plenary meeting		2 Sco 2 Eng
Workshop on precision level		1 Eng
Workshop on age reading on whiting	1 Eng	1 Sco 1 Eng
Workshop on economic data		2 Eng
4/ Planning Groups on surveys at sea (including tuna tagging)		
ICES International Bottom Trawl Surveys Working Group (IBTS)		2 Sco
ICES Planning Group for Herring Surveys (PGHERS)		3 Sco
ICES Planning Group for Aerial and Acoustic Mackerel surveys (PGAAM)		2 Sco
ICES Working Group on Beam Trawl Surveys (WGBEAM)		2 Eng

As requested, a separate fiche has been constructed which contains all of the details relating to international coordination meetings planned for 2004. In some cases it has not been possible to separate the staff costs for involvement in such meetings from the work itself. These instances have been highlighted. As such the estimates for international co-ordination include the full costs of travel and subsistence allowances for

UK PROGRAMME FOR THE COLLECTION AND MANAGEMENT OF FISHERIES DATA IN 2005

attending the meeting, but are to some extent an understatement of the staff costs involved in such meetings. The individual work fiches have been checked to ensure that there is no double counting of expenses or staff time related to these meetings within the UK programme.

Costs of database and coordination -

See the summary of costs at table Annex 1.E

UK PROGRAMME FOR THE COLLECTION AND MANAGEMENT OF FISHERIES DATA IN 2005

13. Resources and costs

The financial details are summarised below and are given in more detail in the 6 tables in Annex 1, by programme for 2004. Summary total indicative costs are given for 2004 to 2006. The scientific co-ordination and database costs are common to both areas and for cost purposes have been split equally between the North Sea and Western Areas.

14. Indicative costs for the year 2005-2006

Total costs for the scientific work in 2005 and indicative costs for 2006, along with the costs of economic data collection and co-ordination and database work for both the minimum and extended programmes are as follows. Full details are provided in Annexes 4 and 5.

Indicative costs 2005-2006:

Year	Minimum programme €	Extended programme €	Total €
2005	6,345,485	1,687,506	8,032,991
2006	6,662,759	1,771,882	8,434,641

UK PROGRAMME FOR THE COLLECTION AND MANAGEMENT OF FISHERIES DATA IN 2005

15. Participating Departments and Agencies

Department of Environment, Food and Rural Affairs
East Block, 10 Whitehall Place, London SW1A 2HH

Scottish Executive, Environment and Rural Affairs Dept. (SEERAD), Pentland House Edinburgh

Department of Agriculture and Rural Development (DARD): Fisheries Division
Hut 5 Castle Grounds, Stormont Estate, Belfast, United Kingdom; Agricultural and Environmental Sciences
Division, Newforge Lane, Belfast BT9 5PX, Northern Ireland, United Kingdom

FRS Marine Laboratory (FRS), Aberdeen Scotland AB11 9DB.

Centre for Environment, Fisheries and Aquaculture Science (CEFAS)
Lowestoft, Suffolk NR 330HT

31 May 2004

UK PROGRAMME FOR THE COLLECTION AND MANAGEMENT OF FISHERIES DATA IN 2005

Annex 1.A

Costs for Discards (Chapter III, E) and lengths or ages of Discards (Chapter III, H) – Minimum Programme

Institute	CEFAS	FRS	DARD	Total
Staff Days	2,591	879	550	4,020
Staff Costs (€)	485,497	191,410	123,254	800,161
Research Vessel days	--	--	--	--
RV Costs (€)	--	--	--	--
Sea Allowances (€)	108,741	129,470	12,920	251,131
Travel Costs (€)	154,486	26,783	0	181,269
Durable equipment (€)	0	0	2,979	2,979
Consumables (€)	23,714	13,965	4,805	42,485
Computing (€)	0	0	0	0
Others (inc. subcontracting) (€)	52,136	0	0	52,136
TOTAL (€)	824,575	361,628	143,958	1,330,161

Annex 1.B

Costs for studies of commercial fleet CPUE indices (Chapter III, F) – Minimum Programme

NB – most costs are not separately identifiable, and are thus included with the costs for sampling landings (see Annex 1.D)

Institute	CEFAS	FRS	DARD	Total
Staff Days	71	0	0	71
Staff Costs (€)	21,893	0	0	21,893
Research Vessel days	--	--	--	--
RV Costs (€)	--	--	--	--
Sea Allowances (€)	0	0	0	0
Travel Costs (€)	0	0	0	0
Durable equipment (€)	0	0	0	0
Consumables (€)	0	0	0	0
Computing (€)	0	0	0	0
Others (inc. subcontracting) (€)	0	0	0	0
TOTAL (€)	21,893	0	0	21,893

Annex 1.C

Costs for research vessel cruises (Chapter III, G) and most biological parameters (Chapter III, I) – Minimum Programme

Institute	CEFAS	FRS	DARD	Total
Staff Days	1,358	898	148	2,404
Staff Costs (€)	295,151	234,271	41,399	570,821
Research Vessel days	103	105	12	220
RV Costs (€)	1,757,987	1,039,741	66,746	2,864,474
Sea Allowances (€)	132,276	151,129	3,876	287,281
Travel Costs (€)	22,344	1,430	404	24,178
Durable equipment (€)	0	0	0	0
Consumables (€)	61,405	34,261	220	95,886
Computing (€)	0	0	0	0
Others (inc. subcontracting) (€)	8,938	0	13,905	22,843
TOTAL (€)	2,278,101	1,460,832	126,551	3,865,483

**UK PROGRAMME FOR THE COLLECTION AND MANAGEMENT OF FISHERIES
DATA IN 2005**

Annex 1.D

Costs for Sampling Landings for Length and age (Chapter III, H) including sampling for commercial CPUE indices (Chapter III, F) – Minimum Programme

Institute	CEFAS	FRS	DARD	Total
Staff Days	871	550	303	1,724
Staff Costs (€)	149,119	119,375	64,441	332,935
Research Vessel days	--	--	--	--
RV Costs (€)	--	--	--	--
Sea Allowances (€)	--	--	--	--
Travel Costs (€)	3,575	50,468	1,074	55,117
Durable equipment (€)	0	0	0	0
Consumables (€)	32,987	13,406	10,308	56,702
Computing (€)	0	0	0	0
Others (inc. subcontracting) (€)	219,959	58,577	0	278,536
TOTAL (€)	405,641	241,826	75,823	723,291

Annex 1.E

Minimum programme: Economic data (Chapter IV) and Coordination (Database & Others – Articles 9 & 10) – Minimum Programme

N.B. Where possible the costs associated with international co-ordination meetings have been included in this section. However, for some such work carried out by FRS, the staff costs associated with the meetings are still included in the sections to which the work relates. More information is provided in the individual fiches.

Institute	CEFAS	UK DATABASE	Economic Data	FRS	DARD	Total
Staff Days	263	40.5	206	n/a	163	672.5
Staff Costs (€)	78,859	12,608	87,727	n/a	37,542	216,736
Research Vessel days	--	--	--	--	--	--
RV Costs (€)	--	--	--	--	--	--
Sea Allowances (€)	--	--	--	--	--	--
Travel Costs (€)	18,844	2,518	22,493	30,970	894	75,719
Durable equipment (€)	0	0	0	0	0	0
Consumables (€)	0	0	0	0	0	0
Computing (€)	2,979	0	0	0	0	2,979
Others (inc. subcontracting) (€)	0	0	105,762	0	0	105,762
TOTAL (€)	100,683	15,126	215,982	30,970	38,436	401,196

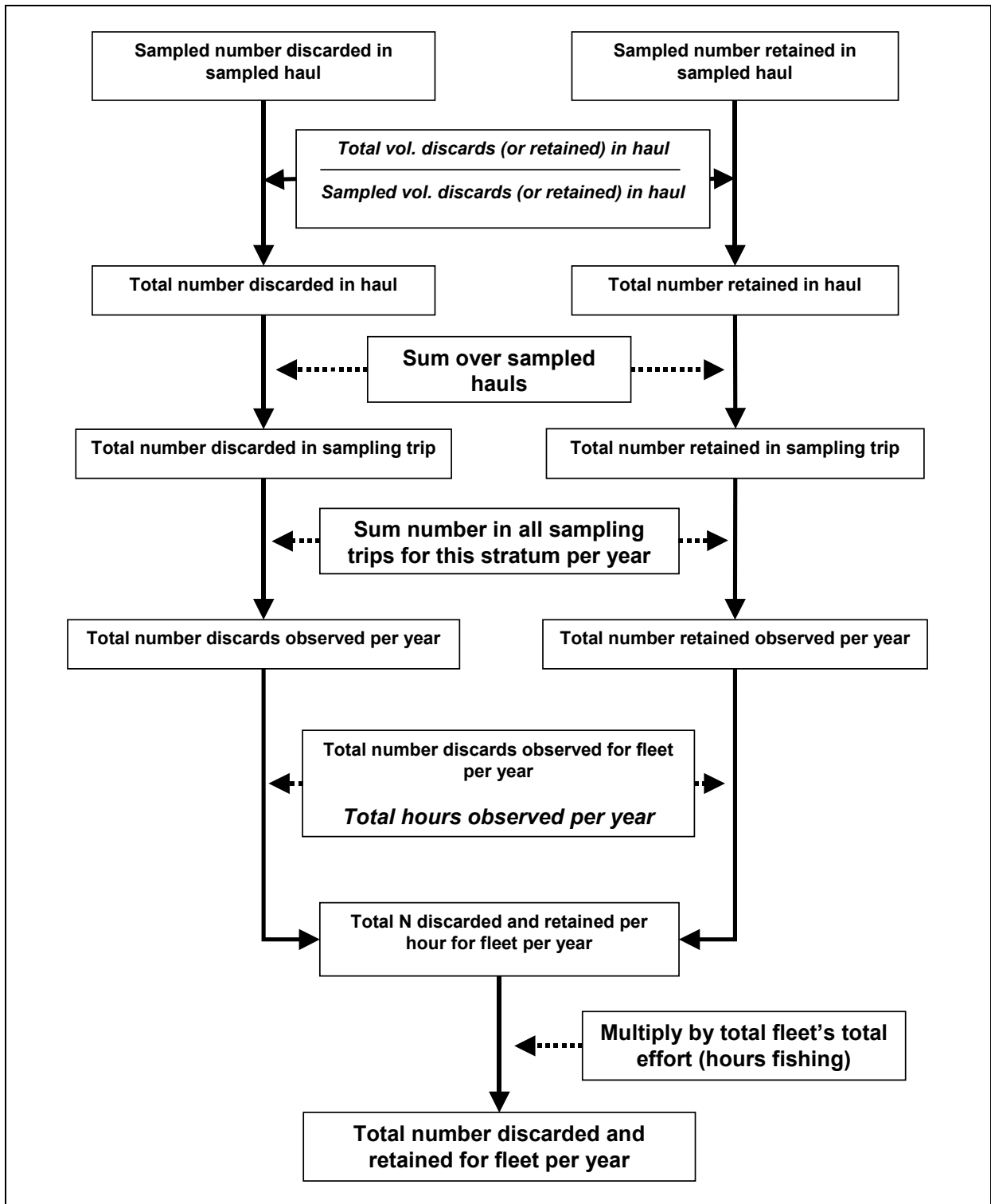
Annex 1.F

Costs for research vessel cruises (Chapter III, G) and most biological parameters (Chapter III, I) - Extended programme

Institute	CEFAS	FRS	DARD	Total
Staff Days	74	534	597.5	1,205.5
Staff Costs (€)	15,941	128,737	166,657	311,335
Research Vessel days	8	84	75	167
RV Costs (€)	136,543	681,045	414,381	1,231,969
Sea Allowances (€)	7,150	96,821	21,291	125,262
Travel Costs (€)	0	0	0	0
Durable equipment (€)	0	0	0	0
Consumables (€)	1,490	17,019	432	18,940
Computing (€)	0	0	0	0
Others (inc. subcontracting) (€)	0	0	0	0
TOTAL (€)	161,124	923,622	602,761	1,687,506

UK PROGRAMME FOR THE COLLECTION AND MANAGEMENT OF FISHERIES DATA IN 2005

Annex 2
English Discard Sampling and Raising Procedure



Annex 3



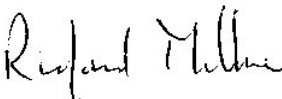
**Bilateral Agreement between the UK (CEFAS) and
Belgium (CLO-DvZ) for the Collection of Length and Age Samples
under the Minimum Programme of Regulation 1639/2001**

In its report from December 2003, SGRN noted that length and age sampling of landings by foreign vessels could be improved by better task sharing between the countries involved.


In compliance with this, the UK and Belgium have agreed that samples of fish landed by Belgian vessels into the UK and transported for first sale into Belgium will be sampled upon arrival in the Belgian auctions by CLO-DvZ as part of the Belgian National Data Gathering Programme under the requirements of the EC Data Collection Regulation (1639/2001). CLO-DvZ will ensure that the estimated additional landings are included in their target when calculating sampling levels and when applying for funds to cover this additional sampling requirement.

At the same time, the UK agrees to carry out additional sampling of UK vessels landing into the UK in order to compensate for the small landings by UK vessels into Belgium which are not sampled by CLO-DvZ.

This agreement confirms the arrangements in place for 2004, and agrees that it should be continued in 2005 and 2006.

Signed for CEFAS: 

Date: 29/04/04

Signed for CLO-DvZ: 

Date: 10/05/04